



WomenCorporateDirectors

A Foundation Inspiring Visionary Boards Worldwide



About WCD

WomenCorporateDirectors Foundation (WCD) is the **world's largest membership organization and community of women corporate board directors**. A 501(c)(3) foundation, WCD is a trusted community of women directors serving on more than 8,500 public and private boards around the world.

WCD supports its thousands of global members in connecting with women corporate directors and advancing visionary corporate governance. Through events, publications, and tools addressing the latest news and trends in business and governance, WCD inspires and educates its members—and raises the bar for board service in public and large private companies globally.

Over the past 18 years, WCD has been instrumental in training

women for board service, providing board opportunities, and facilitating introductions to nominating committee chairs around the world.

WCD Membership Criteria

To be considered for WCD membership, you must be a woman currently serving as a corporate director on either a publicly traded company (of any revenue size) or large privately held company, or family-owned business, with a minimum annual revenue of US \$200 million. International chapters may have a different minimum revenue for private and family business companies, depending upon the country.

BoardNext Membership Criteria

If you are a senior female corporate executive with board aspirations and are not currently on a publicly traded company board, or a

privately held company board that has at least \$200 million in revenue, we encourage you to apply for BoardNext, a program with chapters in Los Angeles and New York that provides educational training, introductions to board members and search firms, as well as a peer group network.

More information can be found at womencorporatedirectors.org.

“*There has never been a time in WCD’s history quite like this, where the opportunity to take a bold step forward can result in significant advancement for women everywhere. As a global organization, our collective voice can move the needle on board diversity.*”

.....
Susan C. Keating, CEO,
WomenCorporateDirectors
Foundation



Our Mission

As the preeminent organization for women board members globally, WCD seeks to:

- Foster a powerful, trusted and global community of women corporate directors that meet specific and objective criteria.
- Increase representation of women on public and large private company boards and in board leadership positions.
- Increase the pipeline of aspiring and qualified female board candidates.
- Inspire visionary boards worldwide – by providing education and tools that keep members engaged, informed, and high-performing as directors.

“To think of WCD as another women’s organization is to ignore its repercussions. WCD has been a game changer in places like Saudi Arabia and other Gulf States as well as Asia and Latin America. WCD is empowering women by giving them a much-needed strong and confident voice. In fact, women who have been culturally marginalized now have a platform that will inevitably lead to changes in public policy.”

Marsha “Marty” Evans, Rear Admiral, U.S. Navy (Ret.); Director, The North Highland Company and Co-chair, WCD’s North Florida and South Georgia chapter



WCD Leadership

(left to right)
Kapila Anand, Lead Director, WCD Foundation, Director, Elanco Animal Health, Extended Stay America, ESH Hospitality, and Omega Healthcare Investors, Inc.

Susan Stautberg, Chairman Emeritus

Susan C. Keating, Chief Executive Officer

Nancy Calderon, Director, WCD, Global Lead Partner, KPMG LLP, and Director, Global Delivery Center, Ltd. KPMG in India



WCD Global Sponsors

WCD’s sponsors provide deep experience in corporate governance, CEO and boardroom succession, executive search, finance, accounting, risk management, and other issues. Our members rely on these trusted advisers to expand their knowledge and expertise as directors.

Global Lead Sponsor



Global Premier Sponsor

SpencerStuart

Global Strategic Sponsors

Pearl Meyer LATHAM & WATKINS LLP

Vinson&Elkins
Established 1917



Global Supporting Sponsors



JPMORGAN CHASE & CO.



Who We Are

WCD represents the preeminent women leaders in business today. WCD members serve on thousands of boards across six continents. Our members include CEOs, board chairmen, lead directors, C-suite executives, board members, and heads of global divisions in the major indices such as S&P 500, FTSE 250, DAX, Nikkei, and beyond.

Quick facts:

85%

of WCD members serve on a public, private, or family business board



Globally, the market capitalization is over

\$8 trillion

for the public companies on whose boards WCD members serve



WCD members serve over

8.5k

boards around the globe



“The WCD Italy chapter has gathered the most influential and capable women in the country. Currently, its members represent more than 50 percent of overall market cap of the Italian stock exchange. **WCD Italy members also serve as chairperson of the board, lead independent director, and chairs of board committees of large listed companies.**”

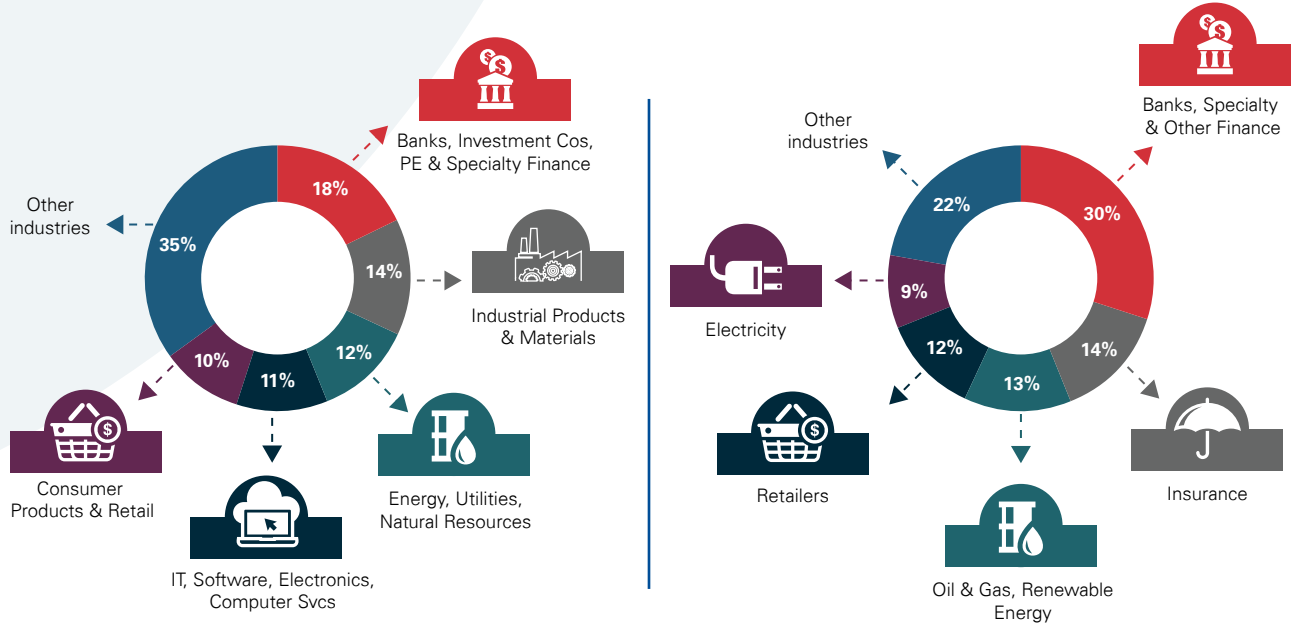
Marina Brogi (Italy), Director of Salini Impregilo; Full Professor of International Banking and Capital Markets, Sapienza University; WCD Italy Chapter Chair and WCD Advisory Board Member

WCD Industry Representation

WCD members serve on boards in a broad range of industries, sectors, and geographies.

Public Boards

Private Boards



Nokia OYJ
Archer Daniels Midland
Mattel **Exxon Mobil**
Whole Foods **Glaxo Smith Kline**
Biogen **Intel Corp.** Berkshire Hathaway
American Express Co. PG&E
Royal Bank of Scotland **AT&T** Carnival Corp
Charles Schwab **Hanesbrands** **Walt Disney Co.**
Colgate Palmolive United Parcel Service Alliant Energy
Ashtead Group Barnes and Noble **Fossil Group**
Starbucks Tempur-Sealy International Deutsche Telekom AG
Kimberly Clark Discover Financial Services Clorox Abbott Labs
Express Scripts Holding Co **Takeda Pharmaceutical Co. LTD**
The Coca-Cola Company Hormel Foods
Tesco Cigna **SalesForce.com** **Microsoft** Wolseley PLC
Sempra Energy Expedia Jabil Circuit Caterpillar
Walgreens Boots Alliance **J.M. Smucker** Levi Strauss BB&T
Ulta Salon Cosmetics & Fragrances Tupperware Brands MetLife
KeyCorp Dr. Pepper Snapple Group
Southwest Airlines Barclays PLC
Standard Life PLC Gap **Biogen**
Aviva PLC Kesko OYJ
Mitsui & Co. LTD ANA Holdings, Inc.
News Corp

Where We Are

WCD has more than **80** chapters around the world.



- Argentina
- Arizona
- Atlanta
- Austin
- Australia – Melbourne & Sydney
- Beijing
- Boston
- Brazil – Rio de Janeiro & Sao Paulo
- Carolinas
- Chicago
- Chile
- Cleveland
- Colombia
- Colorado
- Columbus
- Dallas/Fort Worth
- Denmark
- Detroit
- Finland
- France
- Germany
- Greater New Mexico
- Guatemala
- Gulf Cooperation Council
- Hanoi
- Hawaii
- Ho Chi Minh City
- Hong Kong
- Houston
- Iceland
- India – Delhi & Mumbai
- Indonesia
- Israel
- Italy – Milan & Rome
- Japan
- Kansas City
- Kenya
- London
- Los Angeles/ Orange County
- Malaysia
- Mexico
- Minnesota
- Mongolia
- Morocco
- Myanmar
- Netherlands
- New York
- New Zealand
- Nigeria
- North Florida/ South Georgia
- Panama
- Peru
- Philadelphia
- Philippines
- Puerto Rico
- Quebec
- San Diego
- San Francisco
- Seattle
- Shanghai
- Silicon Valley
- Singapore
- South Africa
- South Florida
- South Korea
- Spain
- St. Louis
- Sweden
- Switzerland
- Tampa
- Tennessee
- Toronto
- Turkey
- Uruguay
- Washington, DC
- Western Canada

Connecting with Peers: Institutes and Events Around the Globe

WCD provides excellent opportunities for women directors to connect with and learn from each other on a local, regional, and global level. From institutes featuring top CEOs, board leaders, and governance experts to local events in the WCD chapters around the world, our programming draws our members into a true community of knowledge and trust.

Institutes

WCD's institutes bring together hundreds of women directors from around the globe each year—creating truly diverse, powerful programs addressing the most urgent board challenges of today.

The flagship program is the Global Institute, which is attended by more than 200 women directors from around the world.

WCD also hosts regional events in EMEA, Asia Pacific, and the Americas.

S&P 500

In 2017, WCD launched the S&P 500 Director Summit, for women who serve on the boards of S&P 500 companies as a peer exchange to discuss pressing governance issues, as well as board diversity.

WCD Visionary Awards

The WomenCorporateDirectors Visionary Awards honor companies and CEOs who have demonstrated a commitment to diversity and inclusion in the C-suite and in the boardroom. Since 2011, WCD has each year named top companies and CEOs as recipients, including: Alaska Air Group, Canadian National Railway, Dot Foods, NextEra Energy, L'Oréal, Procter & Gamble, Publicis, Publix, Intel, Coca-Cola, and Ulta Beauty and CEOs Maggie Wilderotter, Beth Mooney, Marjorie Scardino, and Susan Stautberg, among others.



Chapter Events

WCD chapters provide local connectivity with a global reach and network. Members take advantage of their own local chapters (3–4 events/year) and, in their travels, connect with global peers in other WCD chapter cities.



Family Business Governance Institute

The FBGI brings together female board members and C-level executives from family businesses around the globe to discuss topics of particular concern to family-controlled companies.

Chair/Lead Director Roundtables

These facilitated discussions act as a catalyst for visionary thinking and feature senior WCD board members in a peer-to-peer setting.

Board Committee Exchanges

WCD hosts special sessions designed to give members an opportunity to take a deep dive into key issues impacting the Audit, Nominating and Governance, Compensation, and other board committees.



Sharing Insight: Research and Publications for Director Education



With companies competing with everyone, everywhere, amid great technological disruption, boardrooms value new insight and knowledge more than ever. WCD provides directors a broad range of exclusive information resources essential for leading-class board service.

Member resources draw from the deep experience of peer WCD members, as well as from research of thousands of other directors from around the world.

Global Board Survey

Conducted with Spencer Stuart and researchers from the Harvard Business School, the WCD Global Board Survey taps the insights from 4,000+ male and female directors from 60 countries.

Thought Leadership Commission and Reports

Taking a deeper dive into specific boardroom challenges—from executive compensation to creating more forward-looking boards—the WCD Thought Leadership Commission produces an annual report with insights from its global panel of governance experts.

Board Strategy Briefings

WCD teams with global sponsor KPMG to publish Board Strategy Briefings capturing the key takeaways and insights from the Global Institute and other events.

Member Profiles

Member profiles feature exclusive interviews with WCD members, showing another side of these directors and their contributions.

WCD Global Newsletter

WCD releases a members-only monthly newsletter with updates and links to articles about WCD members worldwide.

Website Resources

WCD provides an online, comprehensive, searchable database of current and relevant resources for all areas of corporate governance—including white papers, interviews and speeches, publications, surveys, and blogs.

Collaborative Reports

WCD collaborates with our sponsors to produce informative papers on boardroom hot topics.

Building Board Networks: Access to Board Positions

“*I find there is great value in having diversity on corporate boards, and WCD is a critical resource for those who are seeking to add ethnic and gender diversity to their companies.*”

Gabrielle Sulzberger,
General Partner, Fontis
Partners and Director, Brixmor
Property Group

WCD connects members with new board opportunities—helping directors expand their own networks and contacts. Through our deep relationships with top global boards and their nominating committees, we receive off-the-record requests for director candidates and help place our members on boards. WCD also coordinates with our global sponsor Spencer Stuart to refer qualified WCD candidates to fill open board seats.

WCD also has relationships with various organizations such as the Association of Executive Search Consultants (AESC) and Equilar’s Diversity Network, providing our members with exposure to executive search consultants and global open board positions as part of WCD membership.

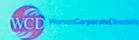
BoardNext

Recently, WCD piloted BoardNext, offering support, training, and networking for women executives who aspire to become corporate directors. Two pilot locations, New York and Los Angeles, feature cohort groups as part of the yearlong program which immerses members in board education, interviewing skills training, and networking opportunities with search firms and active board members.



Panel 1: Companies Reinventing Themselves to Succeed in Industries and Markets

- Kapila Anand (United States) (Moderator), Director, Extended Stay America, Inc., and ESH Hospitality, Inc.; Retired Partner and Senior Advisor, KPMG; WCD Chapter Chair and Lead Director, WCD Foundation
- Rita Cuddihy (United States), Area Vice President, Marriott International
- Luna Garcia (Spain), Partner and COO Latin America, LLORENTE & CUENCA
- Lisa Palmer (United States), President and Chief Financial Officer, Regency Centers; Director, WCD Foundation
- Romina Sosa (Argentina), Vice President, UPS International, Inc., Americas Region





Contact us

WomenCorporateDirectors Foundation

P.O. Box 7487

West Palm Beach, FL 33405

Ph: +1 561-290-0389

F: +1 561-366-2696

membership@womencorporatedirectors.org

www.womencorporatedirectors.org



© WomenCorporateDirectors 2019. All rights reserved.

NDPPS 582222